



IT-SIMPLICITY

FTTH / FTTX Software & Solutions for:
Network designers & engineers.

For the creation of:
Network concepts
Network designs
Network solutions
FTTH / FTTX networks

IT-SIMPLICITY

FTTH / FTTX Networks & Solutions



CONTENT

- ABOUT US
- PROJECT VISION
- FTTH / FTTX NETWORK SOFTWARE
- WHAT WE OFFER TO:

FTTH / FTTX NETWORK DESIGNERS & ENGINEERS



IT-SIMPLICITY

FTTH / FTTX Networks & Solutions



ABOUT US

IT-SIMPLICITY consists of a team of specialists with over 20 years of grounded experience in Telecom, Network Engineering, Project Management and Telecom Software & FTTH / FTTX network solutions.

Since we did a management buy-out in 2013-02-01 and took over all Software rights and ownerships we can now offer our software outside of DRAKA (PRYSMIAN).

Our keywords are:
generic, flexible, scalable, strong and most important..... **SIMPLICITY!**



IT-SIMPLICITY

FTTH / FTTX Networks & Solutions



PROJECT VISION

Our project vision and software is developed within the same project department that build Telecom projects around the world for more than 20 years.

Therefor our software solutions are:

- simple to use
- quick to learn
- totally customizable
- easy accessible
- controlling the whole project-process

IT-SIMPLICITY

FTTH / FTTX Networks & Solutions



SOFTWARE

FTTH / FTTX ITS-Software Suite™: network design

NetDesign™

Flexible solution for FTTH / FTTX network **design**, based on Autocad.

Automatic: costing, cabling, labelling, easy switch from P2P to GPON.

Fast output as: schematics, installer ready & as-built designs. Easy to learn.



IT-SIMPLICITY

FTTH / FTTX Networks & Solutions



SOFTWARE

FTTH / FTTX ITS-Software Suite™: network registration

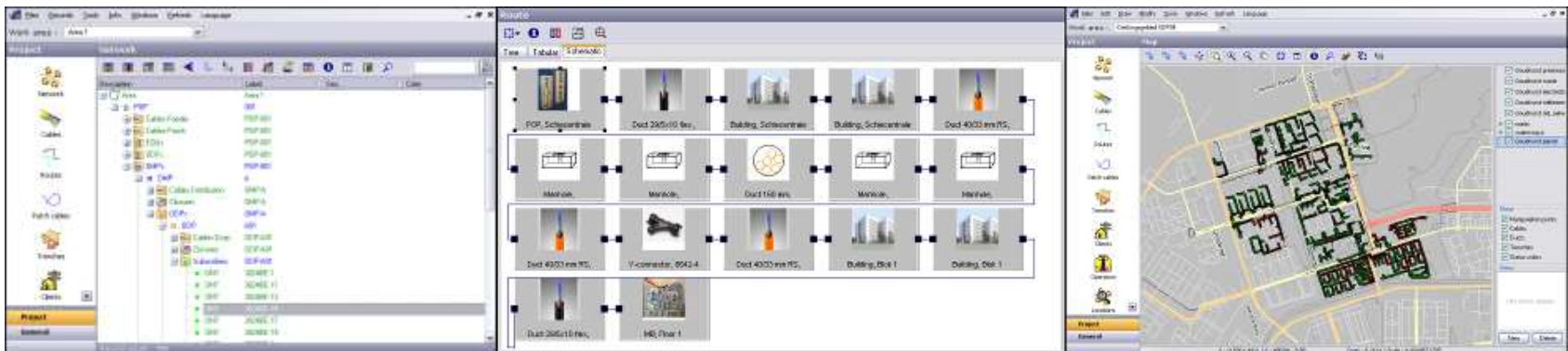
NetID™

Network **registration** with easy tree structure en integrated GIS.

All information directly available for multiple users.

All network details are direct available in multiple views and GIS.

Lego-like customizable building blocks. Easy to operate.





IT-SIMPLICITY

FTTH / FTTX Networks & Solutions



SOFTWARE NetOptimus™

NetOptimus™

Our automatic FTTH / FTTX network design solution.

Creates the highest quality FTTH / FTTX network–designs by using complex optimization algorithms within a user friendly graphical interface.

Cost optimized network designs are made in minutes instead of days.

Optimization parameters:

- Civil costs
- Material costs
- Installation costs

IT-SIMPLICITY

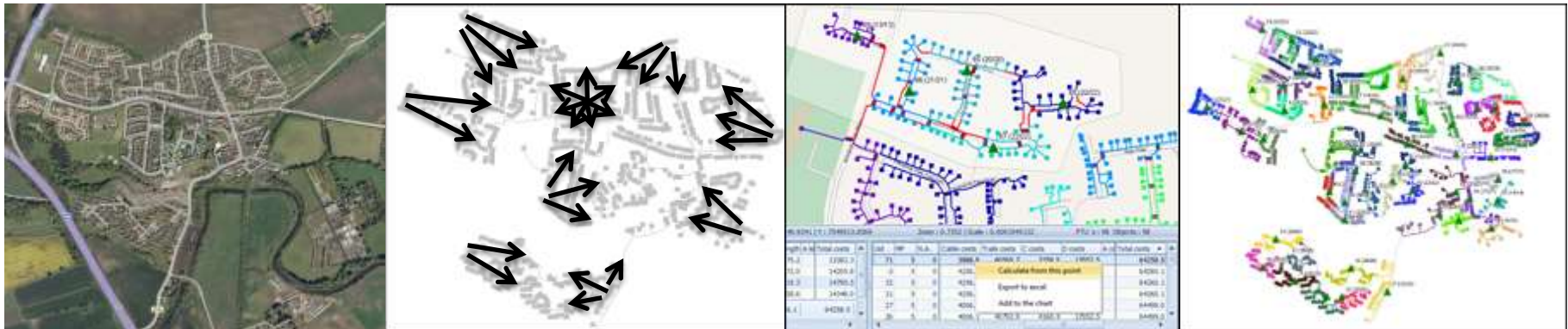
FTTH / FTTX Networks & Solutions



SOFTWARE NetOptimus™

NetOptimus™ offers substantial benefits in terms of reducing the engineering time and network building costs.

The best network designs are listed and made visible within minutes





IT-SIMPLICITY

FTTH / FTTX Networks & Solutions



SOFTWARE NetOptimus™

Network designs and costs are directly available per area.

Multiple levels and network concepts.

Savings (approx):

20 % less drop cable by improved grouping homes

2 % less distribution cable by best DP positioning

2% less trenching costs by improved routing

100 times faster than manual / alternative engineering



IT-SIMPLICITY

FTTH / FTTX Networks & Solutions



What can we offer to:
FTTH / FTTX network engineers & designers?



IT-SIMPLICITY

FTTH / FTTX Networks & Solutions



We offer full support:

- With downloadable intelligent software tools
- For the fast & simple design of FTTH / FTTX networks
- Saving material & installation costs
- Creating reports with all quantities and requirements

IT-SIMPLICITY

FTTH / FTTX Networks & Solutions



THE ENGINEER, STEPS:

- Log in & download the software
- Install the software
- Instruction / training
- CAD: Start a new network drawing and draw possible trenches
- Log in & prepare the data on-line
- Optimize the network automatically with cables & manipulation points
- CAD: import the optimized network design

IT-SIMPLICITY

FTTH / FTTX Networks & Solutions



Download, Log in

HOME ▾ SOFTWARE ▾ SERVICES ▾ NEWS FREE TOOLS ▾ REFERENCES CONTACT **LOGIN ▾**

CUSTOMER DISTRIBUTOR **FREE TOOLS DOWNLOAD**

Free Downloadable Tools

Downloadable files can be seen only by visitors logged in with a free login codes.
Don't have your login code? [Contact Us](#) and request a free login code for downloading brochure & free tools.

Display Num

Powered by [Phoca Download](#)

You need to be logged in to see downloadable files of our free tools. Please log in below.

If you don't have your login code, [Contact Us](#), and request your FREE login code for brochure & free tools.

User Name

Password

Remember Me

Log in

- [Forgot your password?](#)
- [Forgot your username?](#)

IT-SIMPLICITY

FTTH / FTTX Networks & Solutions



Download, optimization software

HOME ▾ SOFTWARE ▾ SERVICES ▾ NEWS FREE TOOLS ▾ REFERENCES CONTACT LOGIN ▾

EXPERIENCE OUTPUT

Free Downloadable Tools

Downloadable files can be seen only by visitors logged in with a free login codes.
Don't have your login code? [Contact Us](#) and request a free login code for downloading brochure & free tools.

Hi demo,
[Log out](#)

ITS NetOptimus brochure	Download
ITS Software Suite brochure	Download
ITS Software and Services presentation	Download
<input type="checkbox"/> NetOptimus installation	Download
<input type="checkbox"/> DrumFit installation	Download

File Downloads

IT-SIMPLICITY

FTTH / FTTX Networks & Solutions



THE ENGINEER, STEPS:

- Log in & download the software
- **Install the software**
- Instruction / training
- CAD: Start a new network drawing and draw possible trenches
- Log in & prepare the data on-line
- Optimize the network automatically with cables & manipulation points
- CAD: import the optimized network design

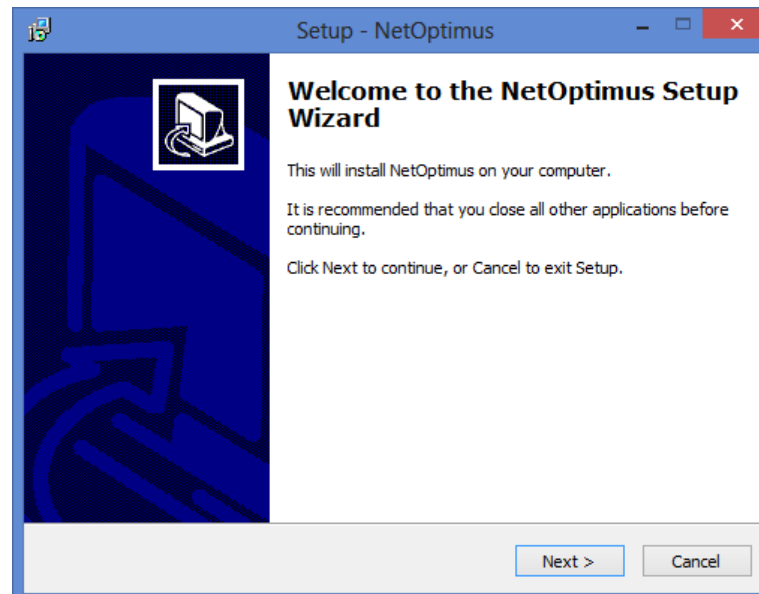
IT-SIMPLICITY

FTTH / FTTX Networks & Solutions



Install the software

Install the Network Optimization software with the NOPinstall.exe



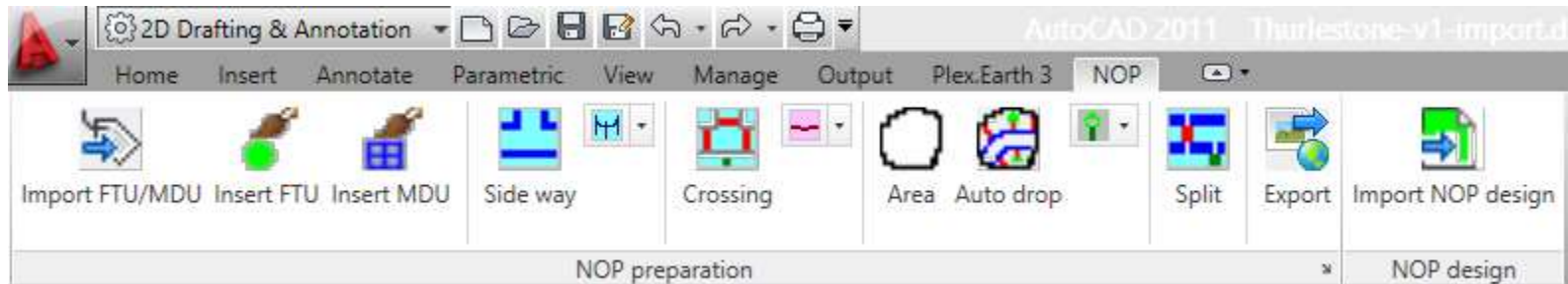
IT-SIMPLICITY

FTTH / FTTX Networks & Solutions



Install the software

Install the Autocad/Bricscad toolbar via simple instructions



IT-SIMPLICITY

FTTH / FTTX Networks & Solutions



THE ENGINEER, STEPS:

- Log in & download the software
- Install the software
- **Instruction / training**
- CAD: Start a new network drawing and draw possible trenches
- Log in & prepare the data on-line
- Optimize the network automatically with cables & manipulation points
- CAD: import the optimized network design

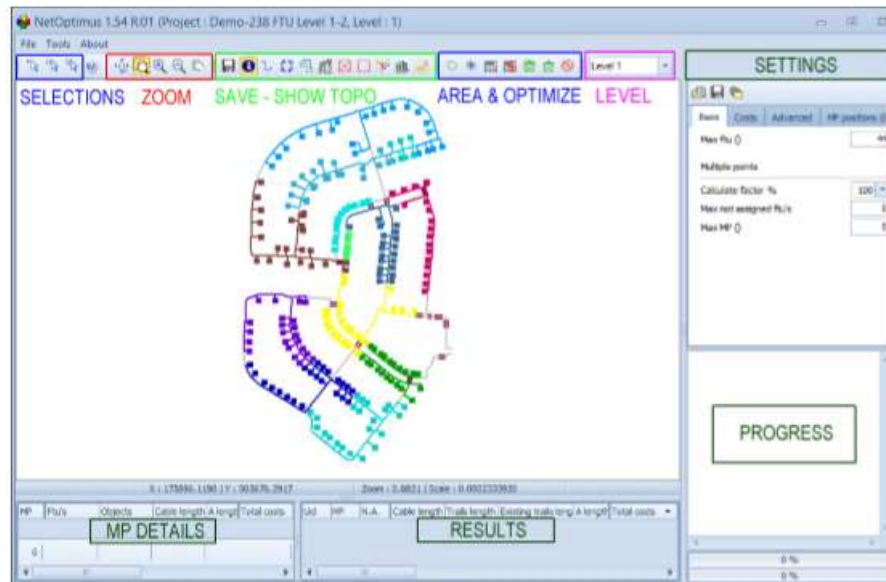
IT-SIMPLICITY

FTTH / FTTX Networks & Solutions



Instruction / training

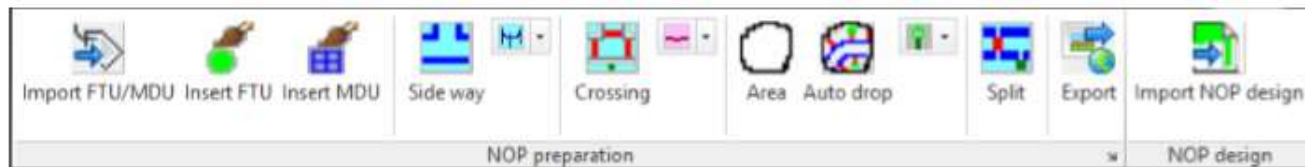
NetOptimus help.pdf (help + a simple example project, 14 pages)





Instruction / training

CAD menu help.pdf (installation procedure + help, 2 pages)



Menu	Description
Import FTU/MDU	<p>Starts a dialog to import your csv file with FTU/MDU locations. [FTU: Fibre Termination Unit / Single Dwelling Unit / Single home] [MDU: Multi Dwelling Unit / Apartment building]</p> <p>File format: <i>Header: 1=(zip)code,2=(house)number,3=(A/B/C)extension,4=room,5=ftu amount, 6=x(coordinate),7=y(coordinate)</i> Example of the csv file: code;number;extension;room;ftu;x;y 3122TG;123;;;1;85039.01;438437.41 3122TG;114;;;5;85037.82;438437.26</p> <p>Inserts symbols in the drawing at certain coordinates. The FTU symbol shows the label as combination of: number-extension-room The MDU symbol shows 2 rows with text: label and amount of apartments</p>

IT-SIMPLICITY

FTTH / FTTX Networks & Solutions



THE ENGINEER, STEPS:

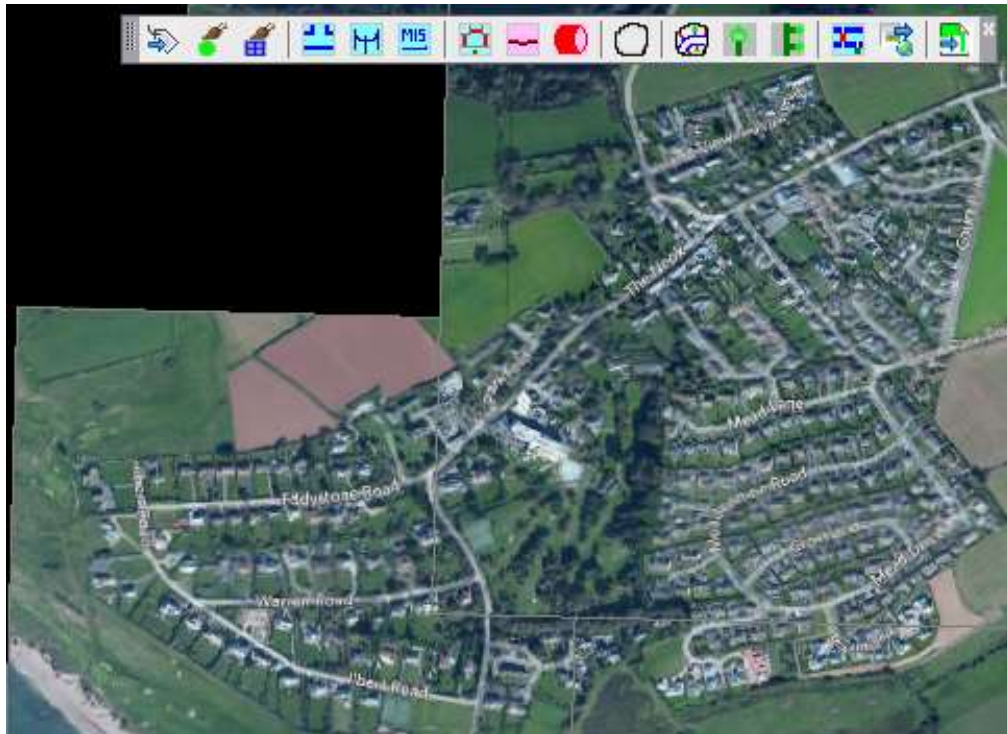
- Log in & download the software
- Install the software
- Instruction / training
- **CAD: Start a new network drawing and draw possible trenches**
- Log in & prepare the data on-line
- Optimize the network automatically with cables & manipulation points
- CAD: import the optimized network design

IT-SIMPLICITY

FTTH / FTTX Networks & Solutions



Start a new network drawing



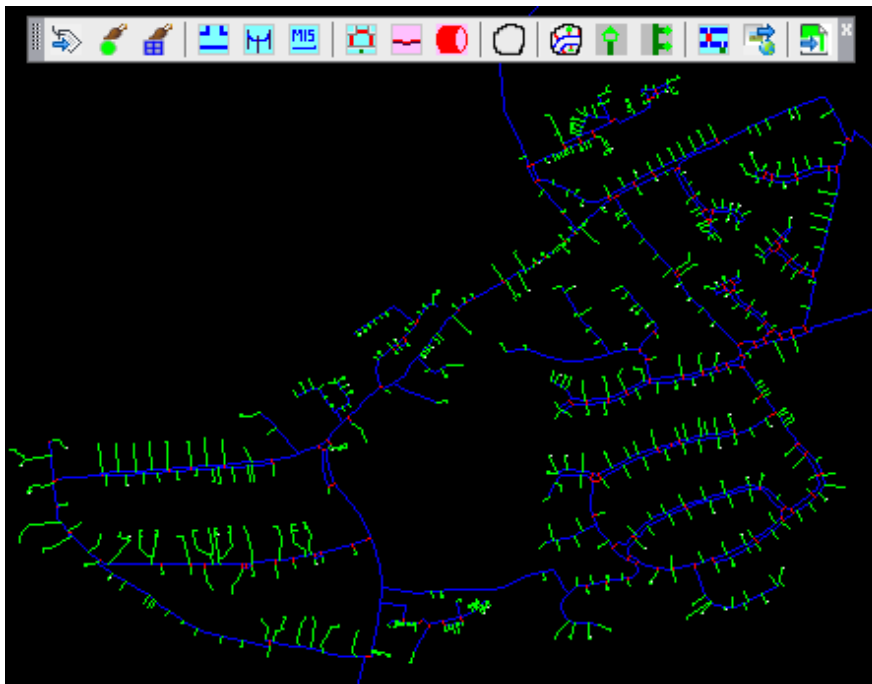
IT-SIMPLICITY

FTTH / FTTX Networks & Solutions



Start a new network drawing

Use the toolbar to insert FTU's and possible trenches, roadcrossings etc.

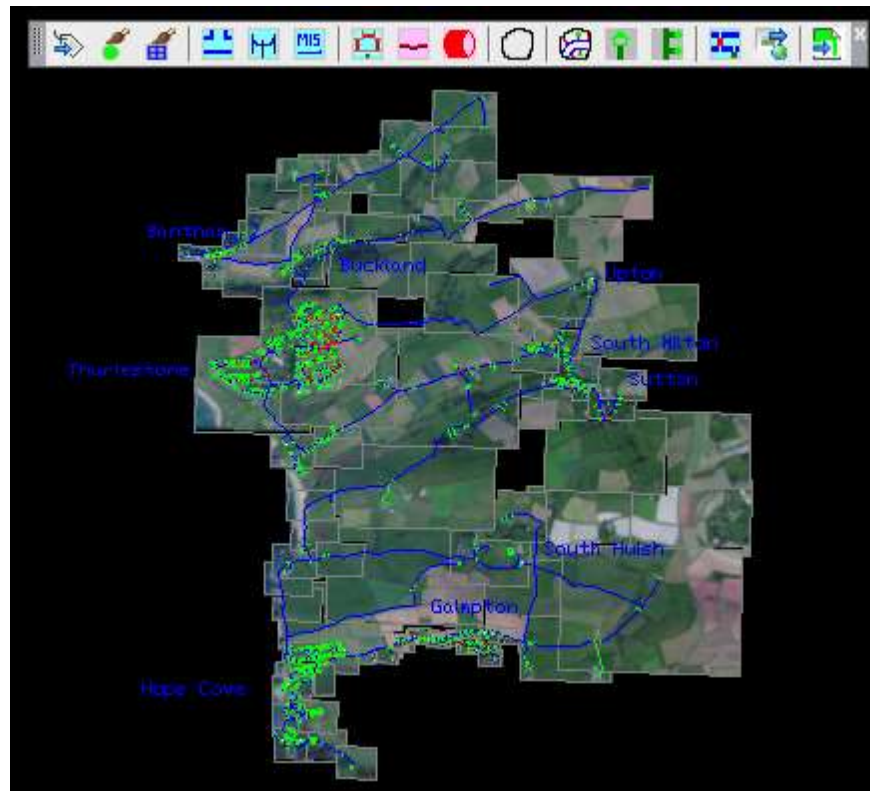


IT-SIMPLICITY

FTTH / FTTX Networks & Solutions



Prepare the whole area



IT-SIMPLICITY

FTTH / FTTX Networks & Solutions



THE ENGINEER, STEPS:

- Log in & download the software
- Install the software
- Instruction / training
- CAD: Start a new network drawing and draw possible trenches
- **Log in & prepare the data on-line**
- Optimize the network automatically with cables & manipulation points
- CAD: import the optimized network design

IT-SIMPLICITY

FTTH / FTTX Networks & Solutions



Log in and prepare on-line

Customer login

Log in

Email :

dick.van.den.dool@it x

Password :

••••

Login

[Forgot your password?](#)

IT-SIMPLICITY

FTTH / FTTX Networks & Solutions



Upload trench data

menu	Welcome!
Welcome Upload history Payments history	Welcome Dick van den Dool. Company : ITsimplicity
Your profile Log out	Purchased credits : 54000 Used credits : 13919 Remaining credits : 40081
	Upload the NetDesign data file (*.nif) from the NetDesignData folder.
	Project name : <input type="text"/>
	<input type="button" value="Bladeren..."/>
	<input type="button" value="Upload"/>

IT-SIMPLICITY

FTTH / FTTX Networks & Solutions



Upload info

menu	Welcome!
Welcome Upload history Payments history	Welcome Dick van den Doel. Company : ITSimplicity
Your profile Log out	Purchased credits : 54000 Used credits : 13919 Remaining credits : 40081
Upload the NetDesign data file (*.nif) from the NetDesignData folder.	
Project name : <input type="text"/>	
<input type="button" value="Bladeren..."/>	
<input type="button" value="Upload"/>	

menu	Payments history (3)															
Welcome Upload history Payments history	<table border="1"><thead><tr><th>Id</th><th>Payment date</th><th>Invoice number</th><th>Amount</th><th>Credits</th></tr></thead><tbody><tr><td>3</td><td>11/01/2013</td><td>0018119</td><td>5000</td><td>3000</td></tr><tr><td>2</td><td>10/01/2013</td><td>0018118</td><td>2000</td><td>1000</td></tr></tbody></table>	Id	Payment date	Invoice number	Amount	Credits	3	11/01/2013	0018119	5000	3000	2	10/01/2013	0018118	2000	1000
Id	Payment date	Invoice number	Amount	Credits												
3	11/01/2013	0018119	5000	3000												
2	10/01/2013	0018118	2000	1000												
Your profile Log out	<u>Comment</u> The types of advertisements displayed are based on a number of factors such as this site's content and your Internet browsing and search history. See the Privacy Policy for more information.															
	<table border="1"><tbody><tr><td>1</td><td>07/02/2013</td><td>0018117</td><td>1000</td><td>50000</td></tr></tbody></table>	1	07/02/2013	0018117	1000	50000										
1	07/02/2013	0018117	1000	50000												

menu
Welcome Upload history Payments history
Your profile Log out

Upload history (163)						
Id	Import date	Project	Imported by	Total FTU' s	Total new FTU' s	Download
163	18/03/2014		Dick van den Doel	150	0	Download
162	14/03/2014		Dick van den Doel	17	0	Download
161	15/02/2014		Dick van den Doel	1382	0	Download
160	15/02/2014		Dick van den Doel	1382	2	Download
159	14/02/2014		Dick van den Doel	1382	0	Download
158	14/02/2014		Dick van den Doel	1382	0	Download
157	13/02/2014		Dick van den Doel	1382	0	Download
156	13/02/2014		Dick van den Doel	110	0	Download
155	13/02/2014		Dick van den Doel	1382	0	Download
154	13/02/2014		Dick van den Doel	1382	0	Download
153	13/02/2014		Dick van den Doel	319	0	Download
152	07/02/2014		Dick van den Doel	494	0	Download
151	07/02/2014		Dick van den Doel	494	0	Download
150	06/02/2014		Dick van den Doel	150	0	Download
149	06/02/2014		Dick van den Doel	150	0	Download

IT-SIMPLICITY

FTTH / FTTX Networks & Solutions



THE ENGINEER, STEPS:

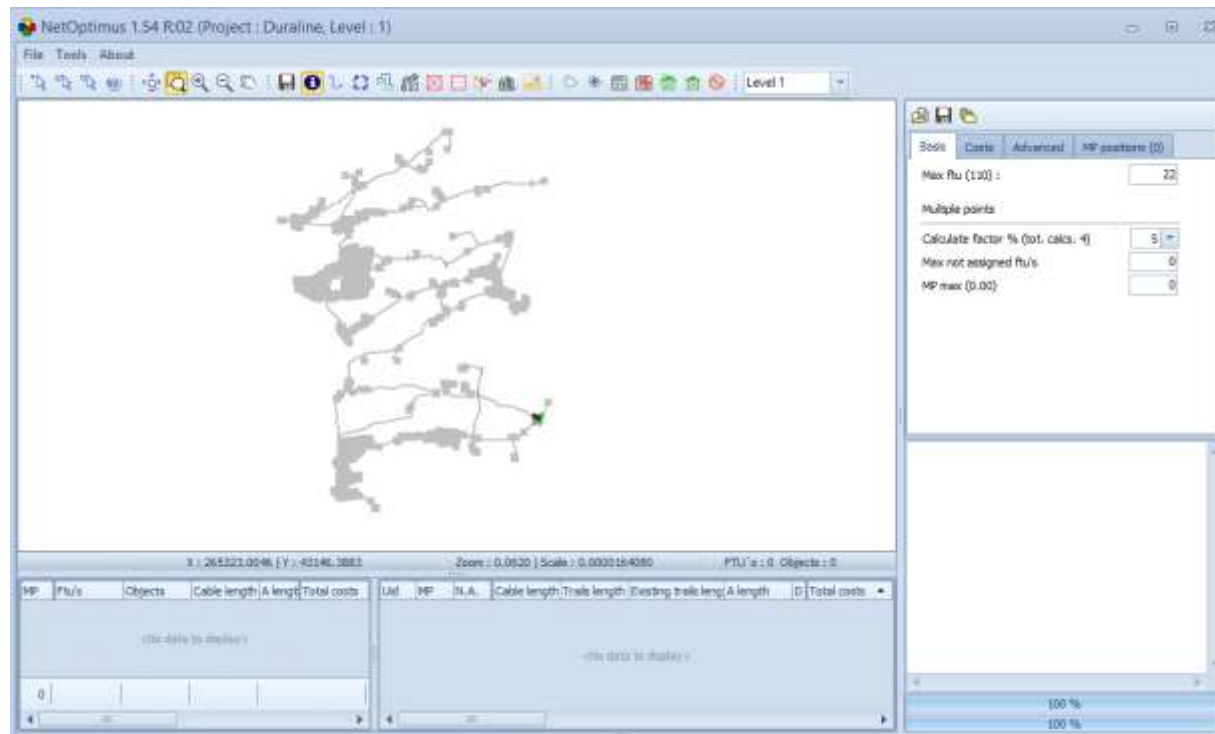
- Log in & download the software
- Install the software
- Instruction / training
- CAD: Start a new network drawing and draw possible trenches
- Log in & prepare the data on-line
- **Optimize the network automatically with cables & manipulation points**
- CAD: import the optimized network design

IT-SIMPLICITY

FTTH / FTTX Networks & Solutions



Automatic optimization

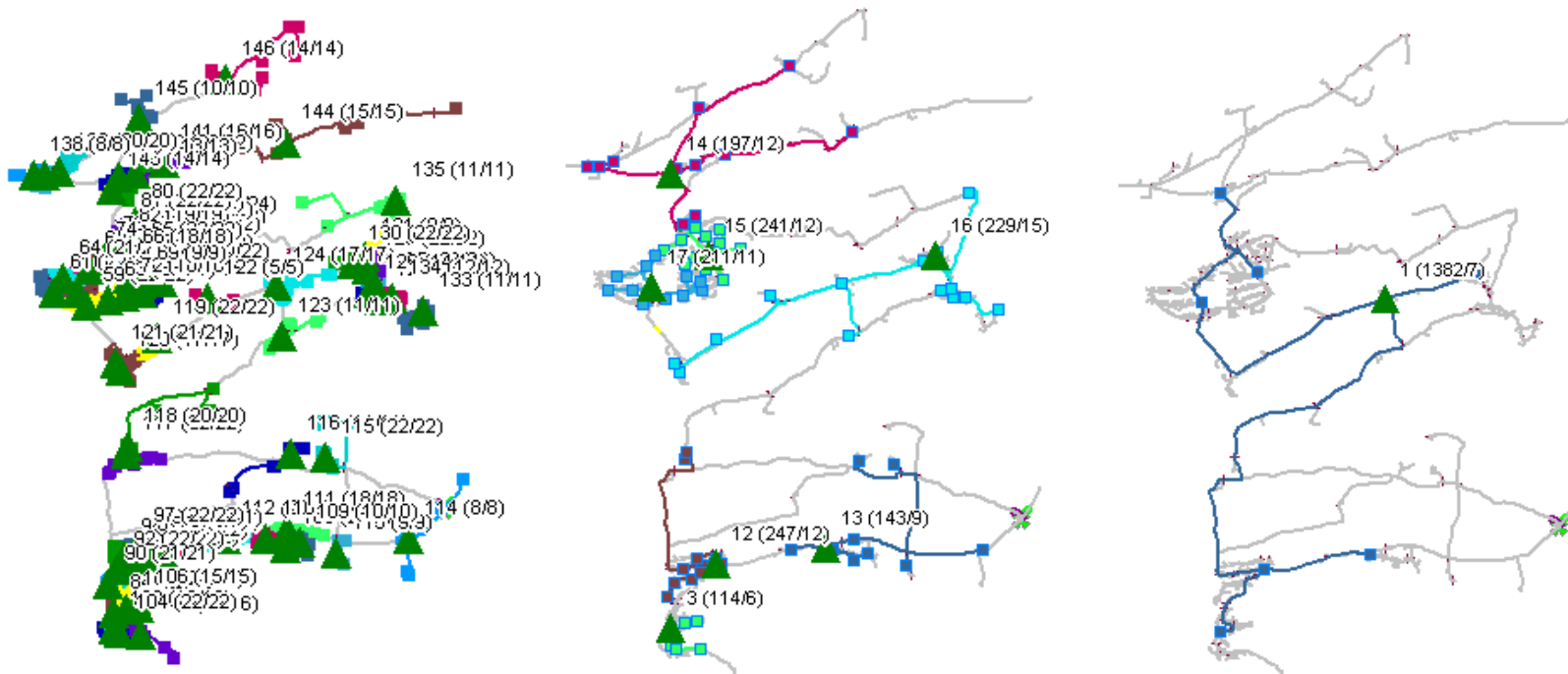


IT-SIMPLICITY

FTTH / FTTX Networks & Solutions



Multiple levels, cost optimized

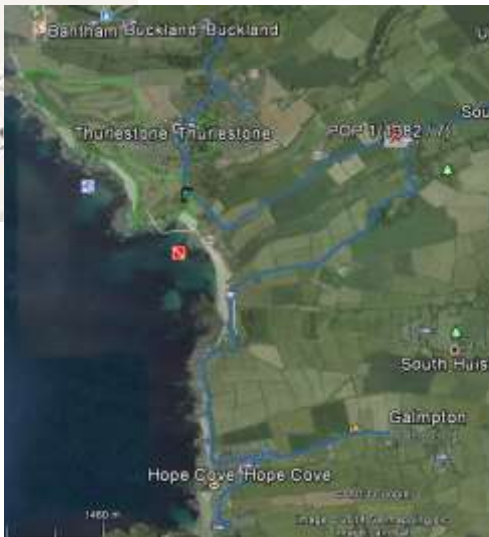


IT-SIMPLICITY

FTTH / FTTX Networks & Solutions



On-line maps & Google Earth



IT-SIMPLICITY

FTTH / FTTX Networks & Solutions



THE ENGINEER, STEPS:

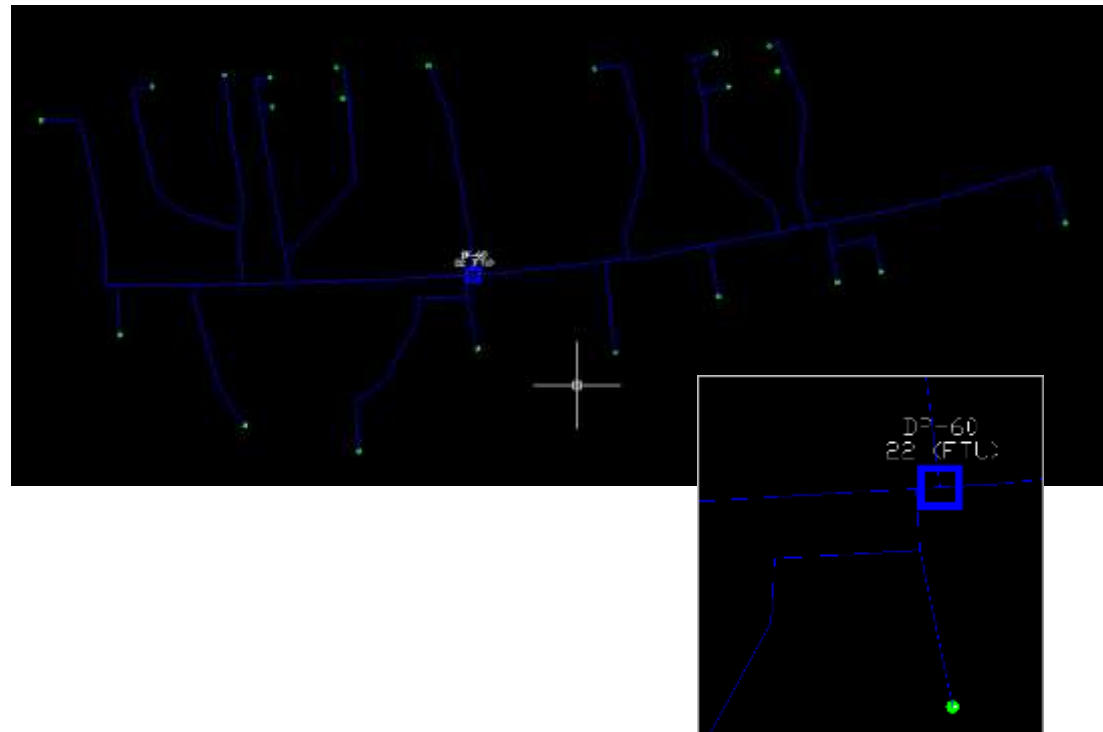
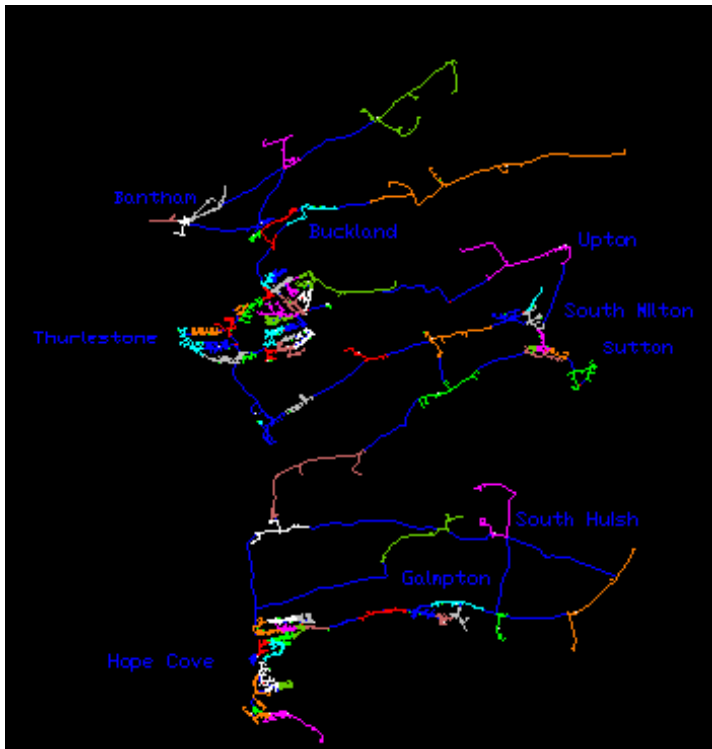
- Log in & download the software
- Install the software
- Instruction / training
- CAD: Start a new network drawing and draw possible trenches
- Log in & prepare the data on-line
- Optimize the network automatically with cables & manipulation points
- **CAD: import the optimized network design**

IT-SIMPLICITY

FTTH / FTTX Networks & Solutions



CAD: import optimized design





IT-SIMPLICITY

ITSimplicity Solutions BV
info@itsimplicity.nl
M +31-646430926
T +31-348552981
Skype: itsimplicity
www.itsimplicity.nl